



# TELLNEXT

## TELLNEXT CONFIGURATION MANAGER GUIDE

This document will show you how to create or modify a TellNext project with TellNext Configuration Manager desktop application.



## Table of Contents

WHAT IS TELLNEXT CONFIGURATION MANAGER.....	3
HOW TO INSTALL TCM .....	4
TCM INTERFACE.....	7
CREATE A PROJECT.....	8
EXPRESS MODE CONFIGURATION.....	9
NON-EXPRESS MODE CONFIGURATION .....	11
WIZARDS MODE CONFIGURATION .....	12
MANUAL CONFIGURATION .....	13
PROFILES AND PROCESSES .....	16
PROFILES .....	16
PROCESSES .....	18
RENAME PROFILEs OR PROCESSES .....	20
DELETE PROFILES OR PROCESSES .....	21
ADDITIONAL FILES.....	22
DEPLOY TO ANDROID DEVICE.....	23
ANNEX .....	25

1.1 - 21/03/2018	Annex added to clarify the project files

## WHAT IS TELLNEXT CONFIGURATION MANAGER

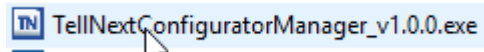
The TellNext Configuration Manager (TCM) is a desktop application that will help you to create easily a TellNext project ready to be deployed to your Android device.

TCM will allow you to set the corresponding parameters of profiles and processes for your TellNext application for Android.

Once your project is configured, TCM will send it to your Android device with only one mouse click.

## HOW TO INSTALL TCM

You will be provided with the installer package of TCM.



You must execute this file and follow the instructions. In a few seconds the TCM application will be installed in your PC.


It will be installed by default in C:\HubOne\TellNextConfigurationManager, and a new folder named TellNextConfigurationManagerProjects will be created too in the same path.

So, the folder structure for TCM will be the following:

C:\HubOne	<b>TellNextConfigurationManager</b>	
	<b>TellNextConfigurationManagerProjects</b>	Project_1
		Project2

<b>TellNextConfigurationManager</b>	Contains the files of the TCM application, including language libraries and log files
<b>TellNextConfigurationManagerProjects</b>	Contains subfolders for every project created with TCM. Each project folder contains the source files used to create the project and the result folder structure ready to deploy in your Android device.

We will provide you with another exe file that will help you to copy all source TellNext files. These files correspond to the latest version of TellNext®.

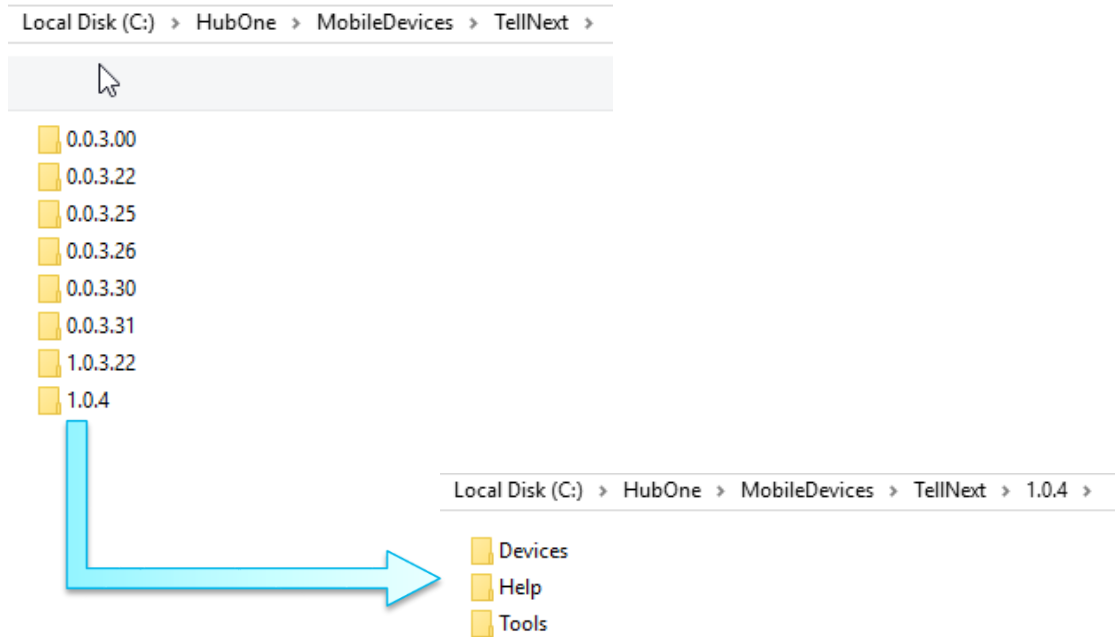
 **TellNext\_0.0.3.31.exe**

You must execute this new package installation.

Once this installation is finished, the source files of the latest version of TellNext. will be copied in the following path: C:\HubOne\MobileDevices\TellNext. You can find in that folder all the previous versions you have installed before.

So, the folder structure for TellNext source files will be:

<b>C:\HubOne</b>				
	<b>MobileDevices</b>			
		<b>TellNext</b>		
			V <sub>1</sub>	Devices
				Help
				Tools
			V <sub>2</sub>	
			...	
			V <sub>n</sub>	



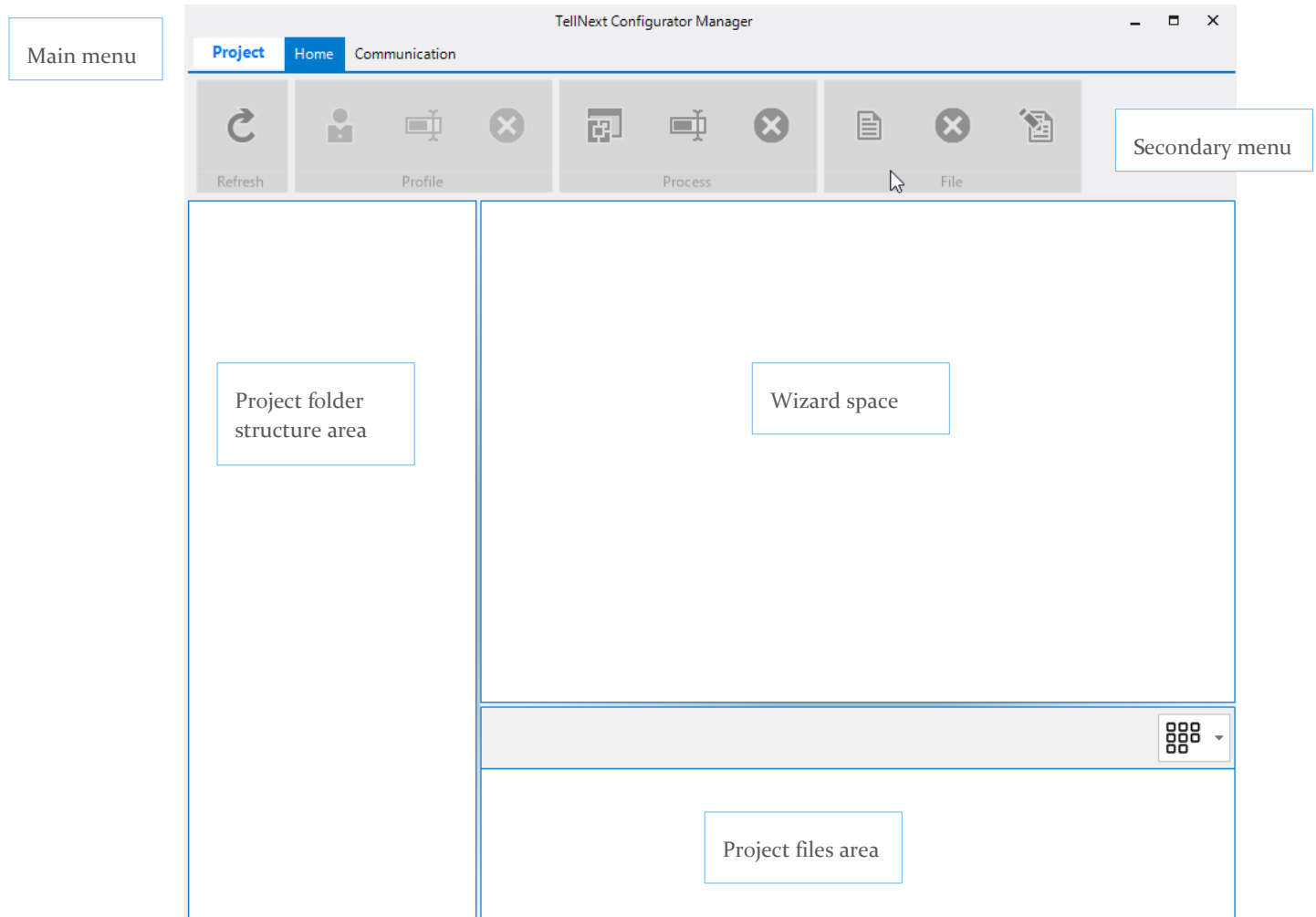
Every folder of TellNext versions have these subfolders:

<b>Devices</b>	Contains different folders depending on the device TellNext could be deployed to. Each device folder contains the APK files, config files and some bat files to install automatically TellNext application in your Android device.
<b>Help</b>	Contains help files
<b>Tools</b>	Contains icons, sounds, wizards and definition files of TellNext application. Additionally, ADB application is provided for installing TellNext using bat files previously defined in Devices folder.

## TCM INTERFACE

Open your TellNextConfigurationManager.exe file from  
C:\HubOne\TellNextConfigurationManager folder.

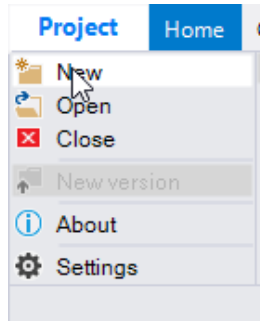
You will see the program interface. This interface is divided in five areas:





## CREATE A PROJECT

From Menu – Project, click on New option



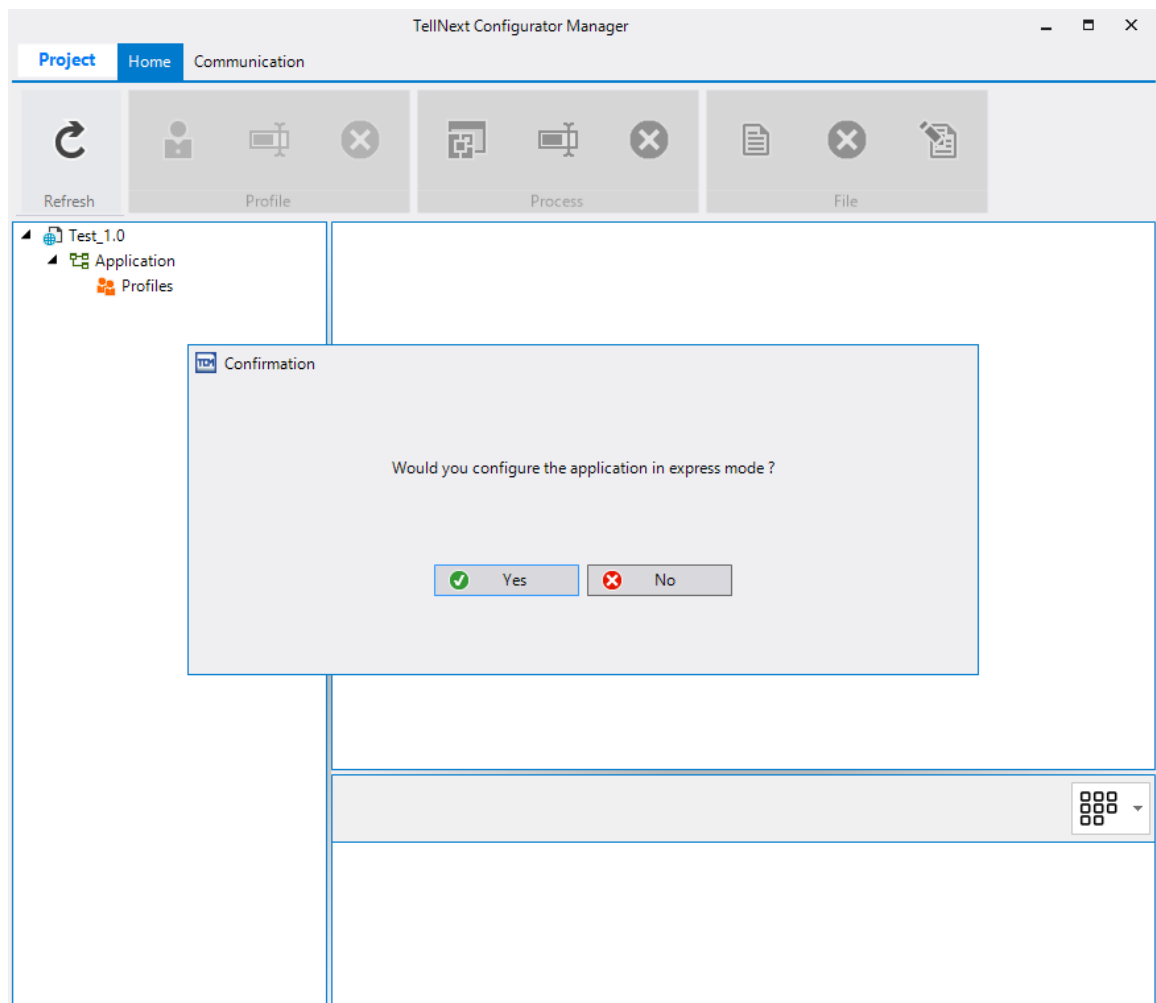
You will be required to enter the following parameters:

- Name and Version of the new project
- Root path to save the project. By default, it will be indicated the TellNextConfigurationManagerProjects folder.
- Target platform to configure the project with certain default values depending on the device it will be deployed to. The Target platform selection allows to select the last version of TellNext source files.

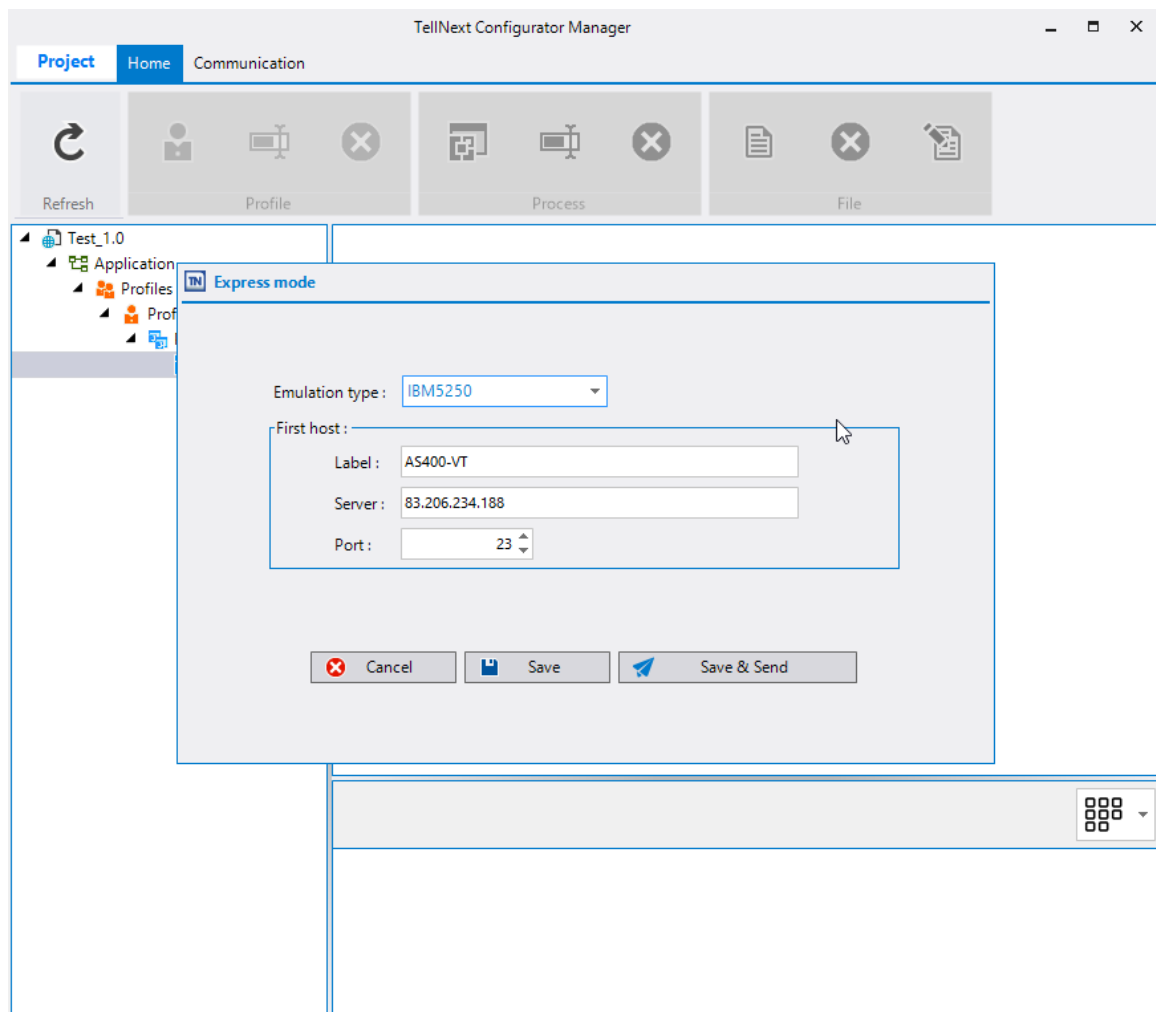
A screenshot of the 'New project' dialog box within the TellNext Configurator Manager application. The dialog box has a title bar 'TellNext Configurator Manager' and tabs 'Project', 'Home', and 'Communication'. Below the tabs is a toolbar with icons for 'Refresh', 'Profile', 'Process', and 'File'. The main area of the dialog is titled 'New project' and contains four input fields: 'Name' (empty), 'Version' (empty), 'Root path' (pre-filled with 'C:\HubOne\TellNextConfiguratorManagerProjects' and a browse button), and 'Target platform' (pre-filled with '(none)' and a dropdown button). At the bottom are 'Save' and 'Cancel' buttons. A small icon of a grid is visible in the bottom right corner of the dialog.

## EXPRESS MODE CONFIGURATION

When you Save these parameters, you will be required to confirm if you want to configure the TellNext project in Express Mode configuration or not.



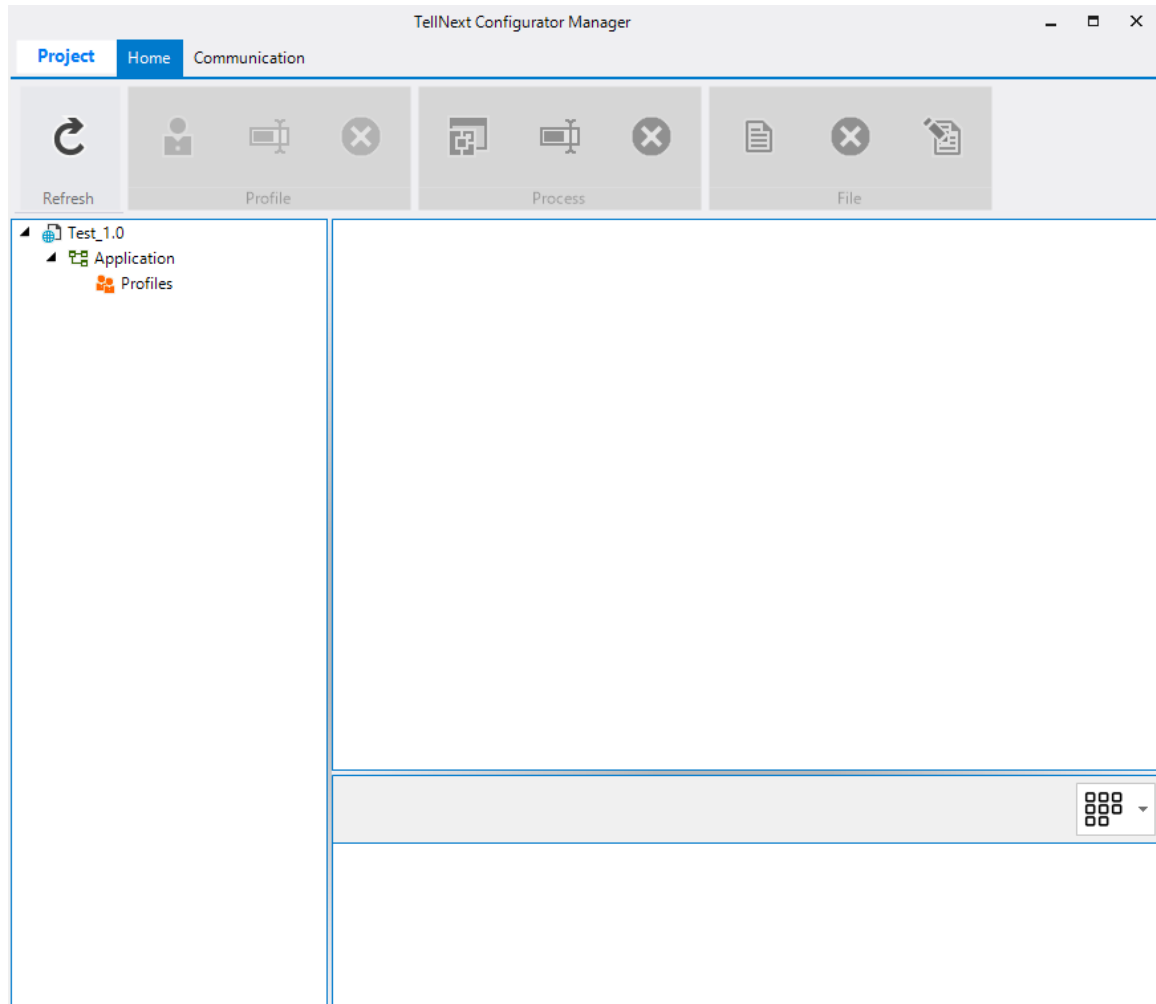
If you select Yes option, you must configure only the parameters about emulation type and the IP of the host you want to connect to. The rest of parameters will be set with the default values.



## NON-EXPRESS MODE CONFIGURATION

On the other hand, if you select No Express Mode, you will be able to configure some more parameters manually or through Wizards.

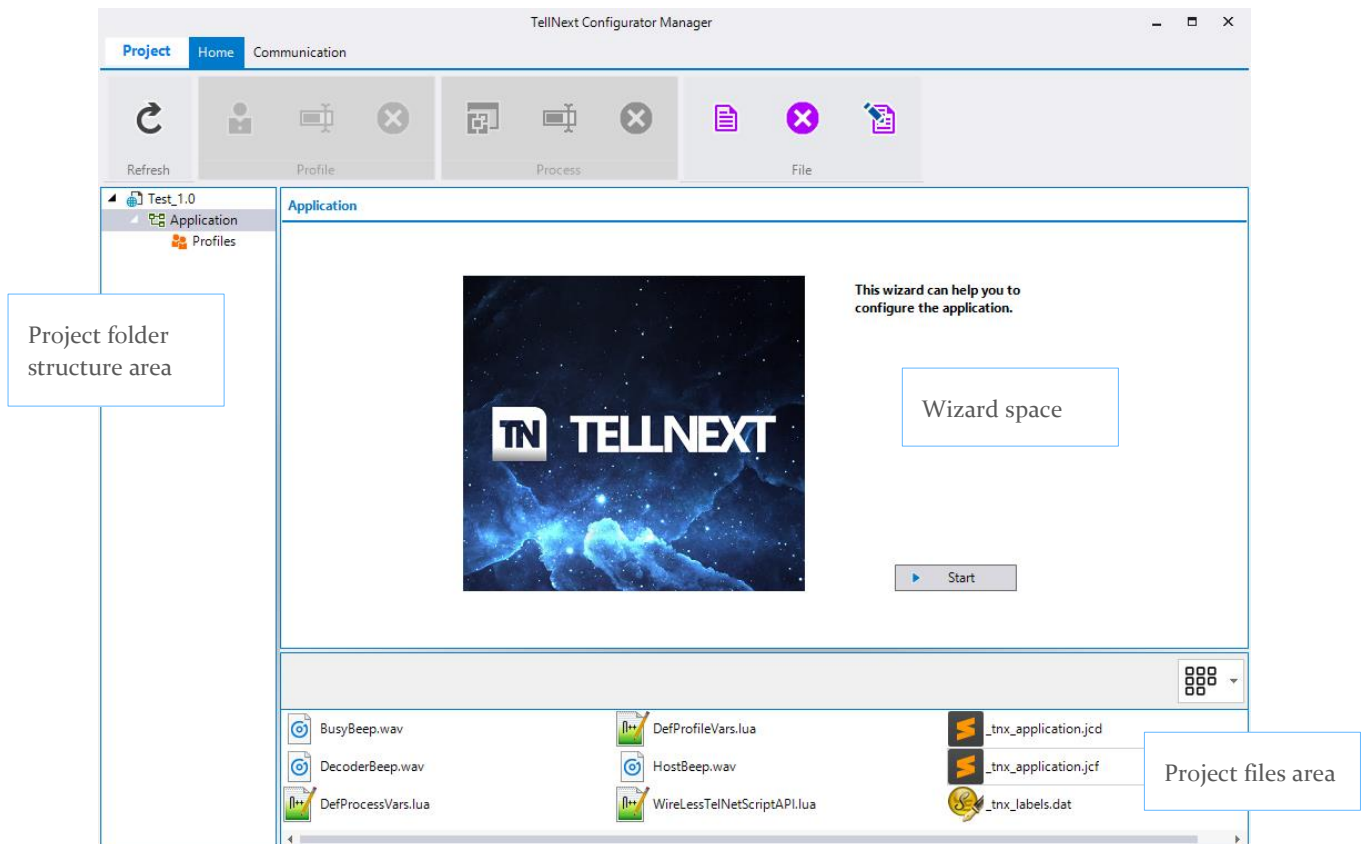
Let's see these two additional modes.



When you select No Express Mode, TCM will create the beginning of the folder structure of your project.

The part of Application will be set with the default values depending on the device you selected in the initial choice of Target platform.

If you select “Application” in the Project folder structure area of the TCM, you will see the files present in this configuration (Project files area) and the possibility of initiating a Wizard to review parameters (Wizard space).

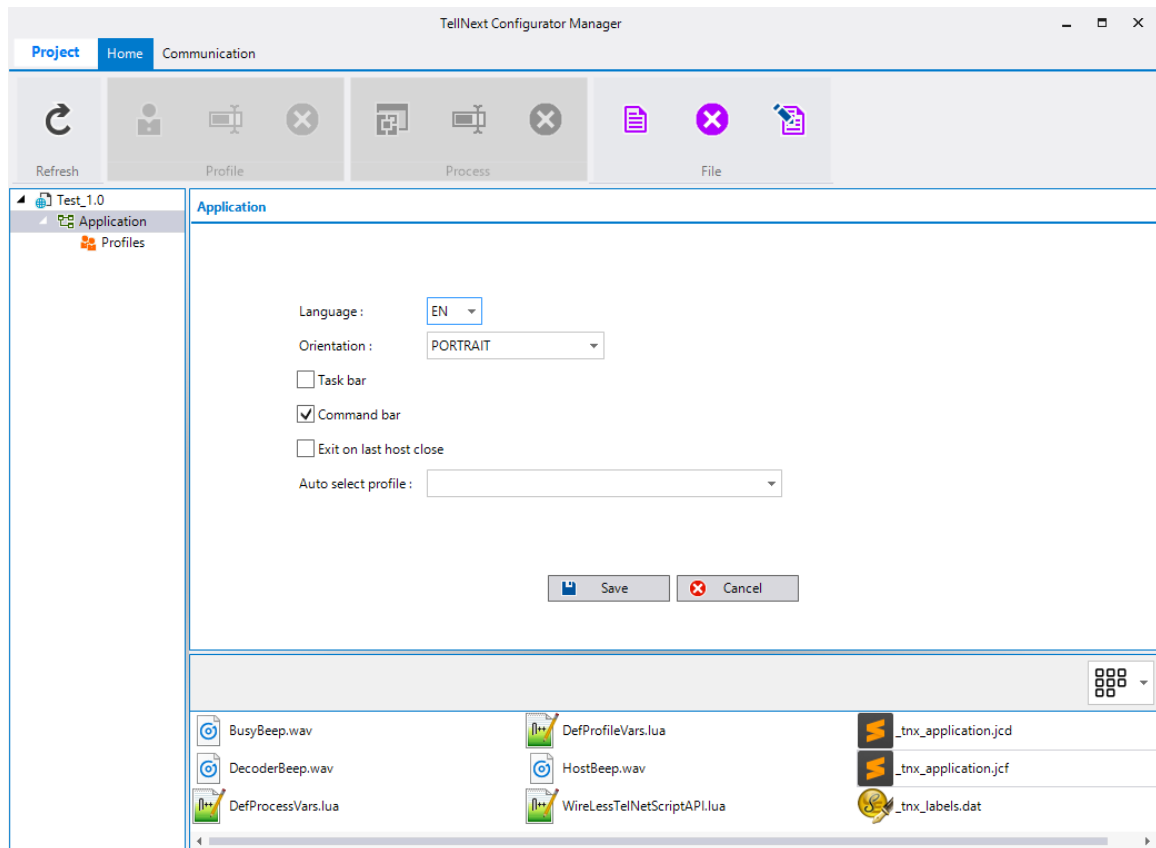


## WIZARDS MODE CONFIGURATION

At this point, you can initiate the Wizard with Start button located on Wizard space.

Once the wizard is started, you only have to follow the steps with Next buttons and configure the parameters displayed.

Once the wizard is finished you will be required to save the configuration with the final button Save. Then, the program will return to main screen of Wizard.

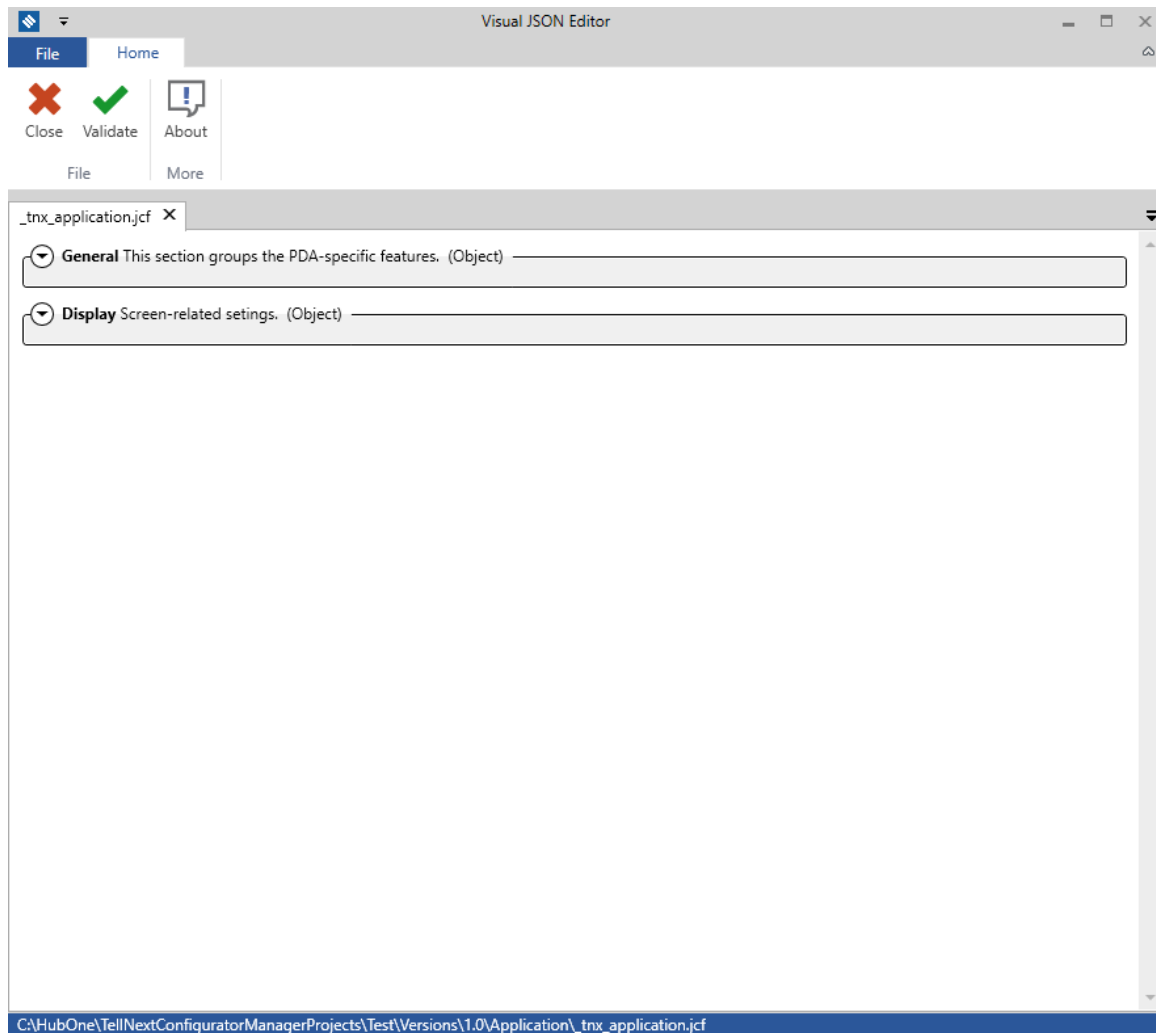


## MANUAL CONFIGURATION

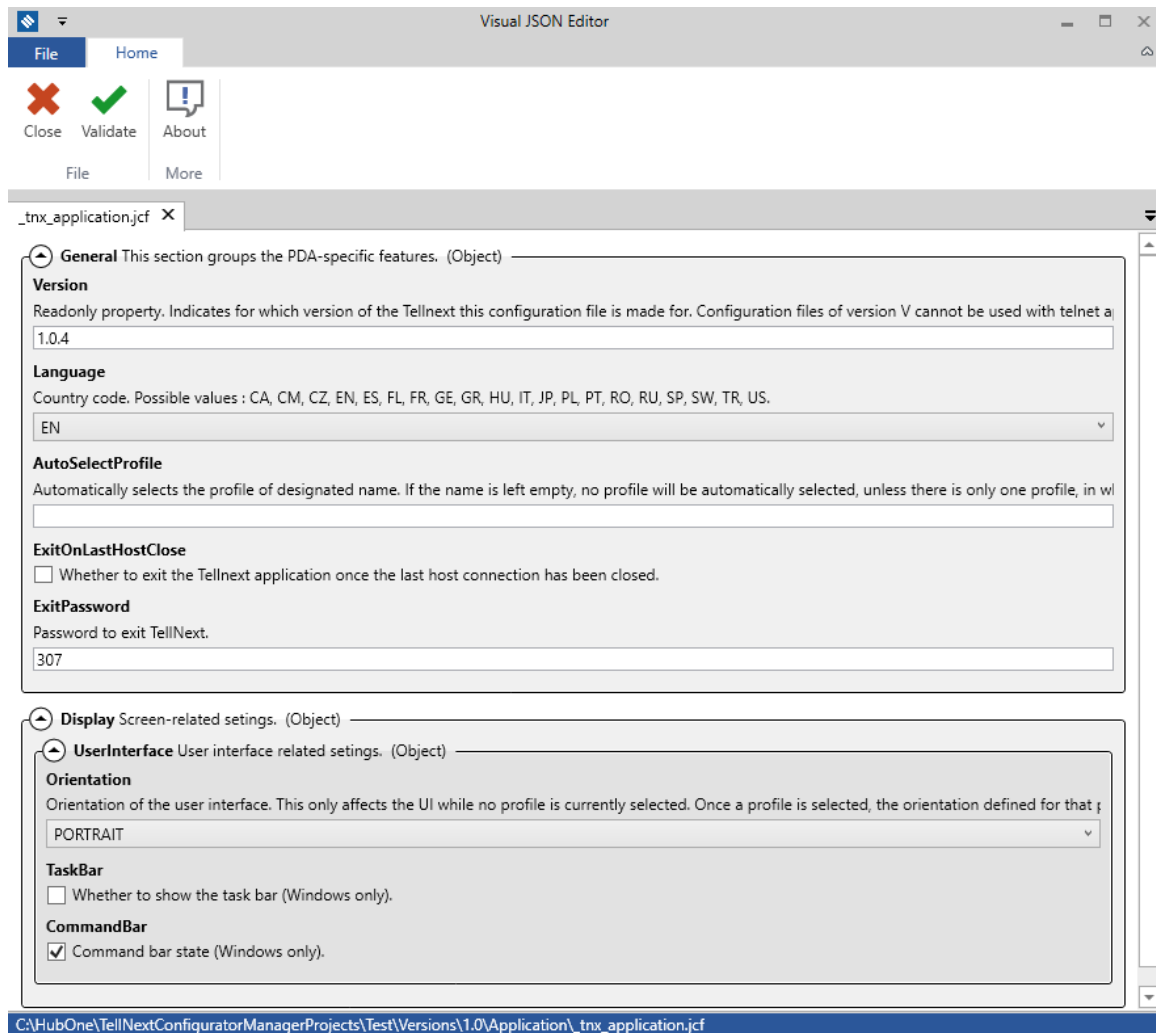
Similarly, you can edit manually the configuration files (`_tnx_application.jcf`) you can see at Project files area with VisualJsonEditor.

VisualJsonEditor is a JSON files editor provided with your TCM package installer. Only `jcf` files (configuration files) should be edited. The modification of `jcd` files (definition files) could affect the validation of `jcf` files.

Double click on `_tnx_application.jcf` file and VisualJsonEditor will be opened. The content of the file will be displayed in collapse mode.



So, to edit the values of parameters you can expand the titles to view the detail.



You will find dropdown parameters or parameters that allow to change its value. You will find a little description of every parameter.

After some change is made, you must validate the file with the option button Validate. When you close the file, you will be required to confirm you save the variations.



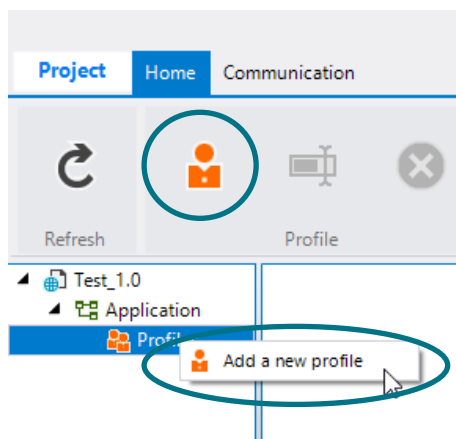
## PROFILES AND PROCESSES

### PROFILES

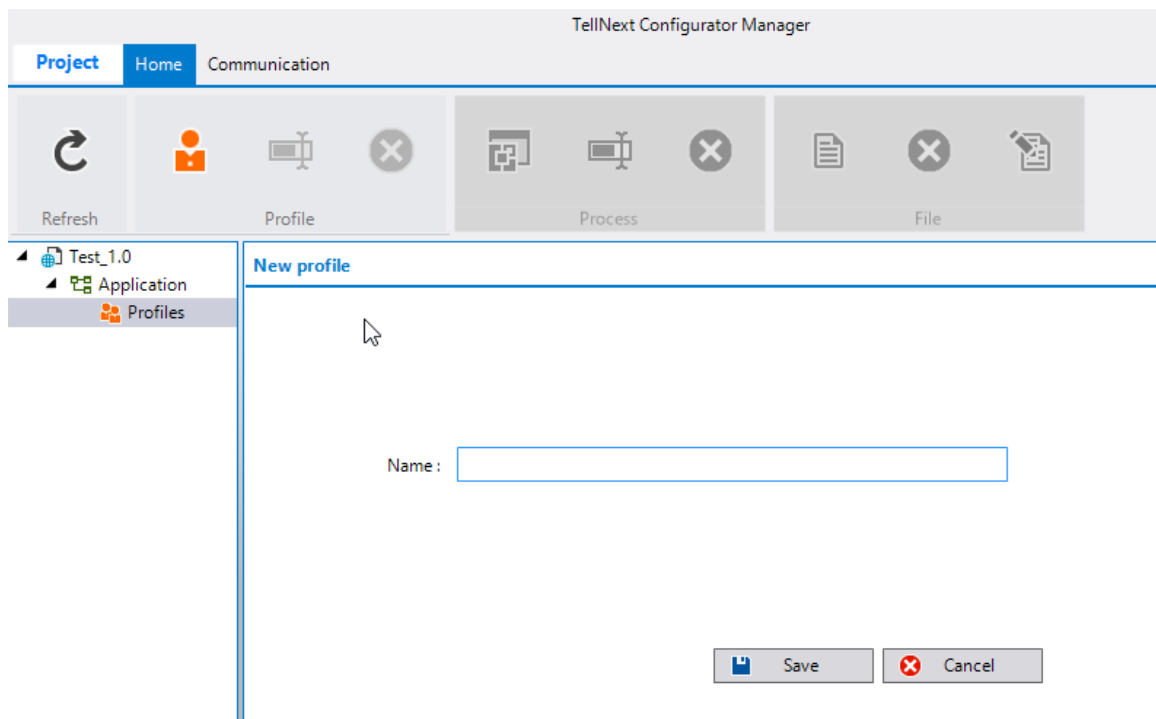
If you select “Profiles” in the Project folder structure area of the TCM, you can create new profiles.

The profile creation can be done in two ways:

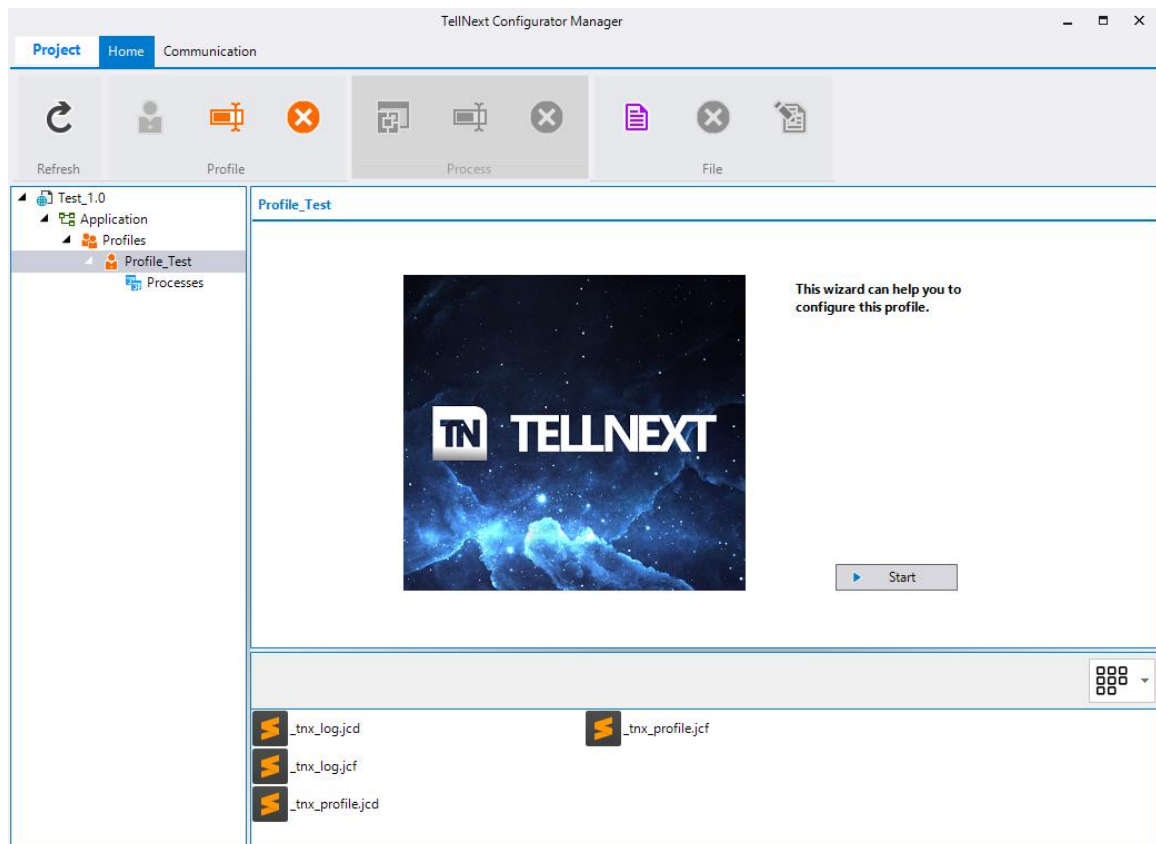
- by clicking the right mouse button and then selecting the option “Add a new profile”
- by selecting the second button in the secondary menu bar



Next you must introduce a Name for this new profile and click on Save.



The new profile will be created (and its corresponding Processes section too) and you will have the option of review the configured parameters through a Profile wizard or manually, with VisualJsonEditor, as we indicate in the above section.



You can create as many profiles as you need.

If you select this “Processes” folder in the Project folder structure area of the TCM, you can create new processes with the same procedure as we indicate in profile section.

The screenshot displays the SAP Fiori 'Test\_1.0' application. The top navigation bar includes 'Project', 'Home', and 'Communication' tabs. Below the tabs are buttons for 'Refresh', 'Profile', and a circled 'Add a new process' button. The left sidebar shows a tree view with 'Test\_1.0' expanded, containing 'Application', 'Profiles', 'Profile\_Test', and 'Processes'. The 'Processes' button is also circled, and a tooltip 'Add a new process' is visible over it.

TellNext Configurator Manager

Project Home Communication

Refresh Profile Process File

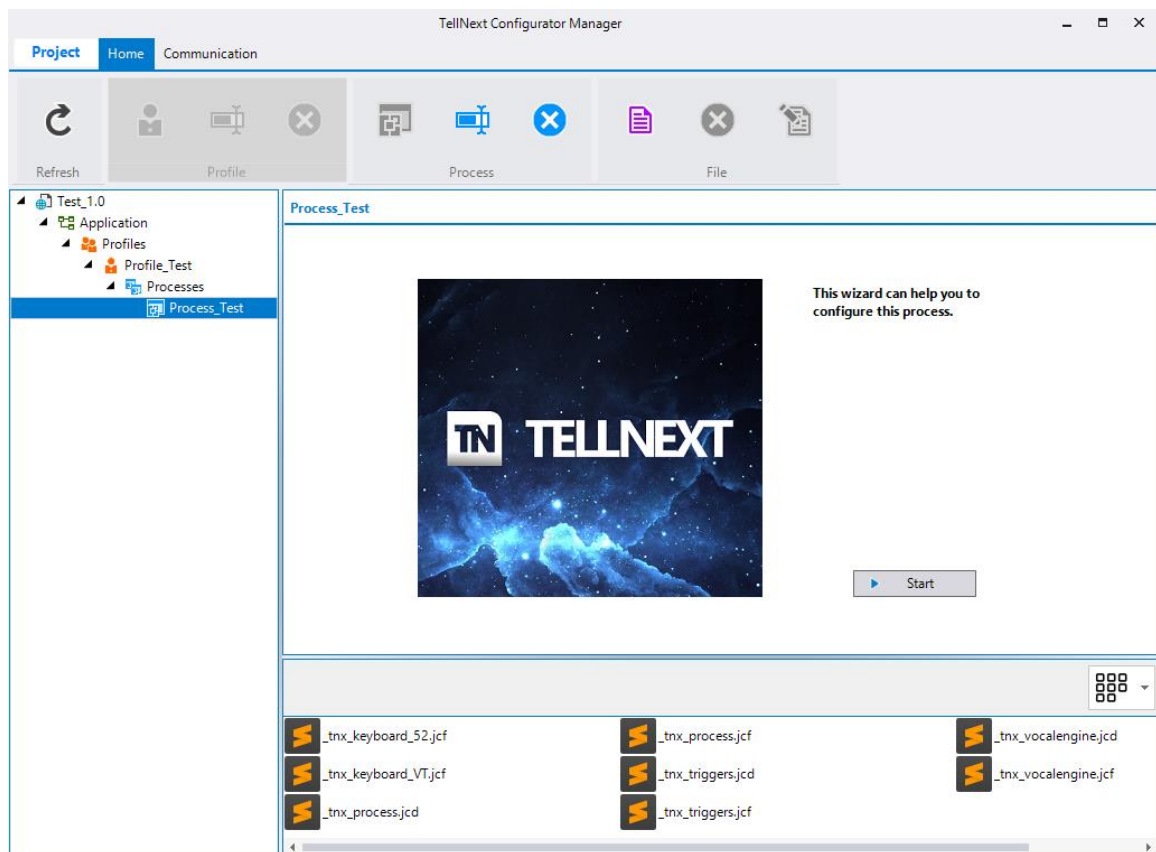
Test\_1.0
 

- Application
- Profiles
  - Profile\_Test
  - Processes

New process

Name:

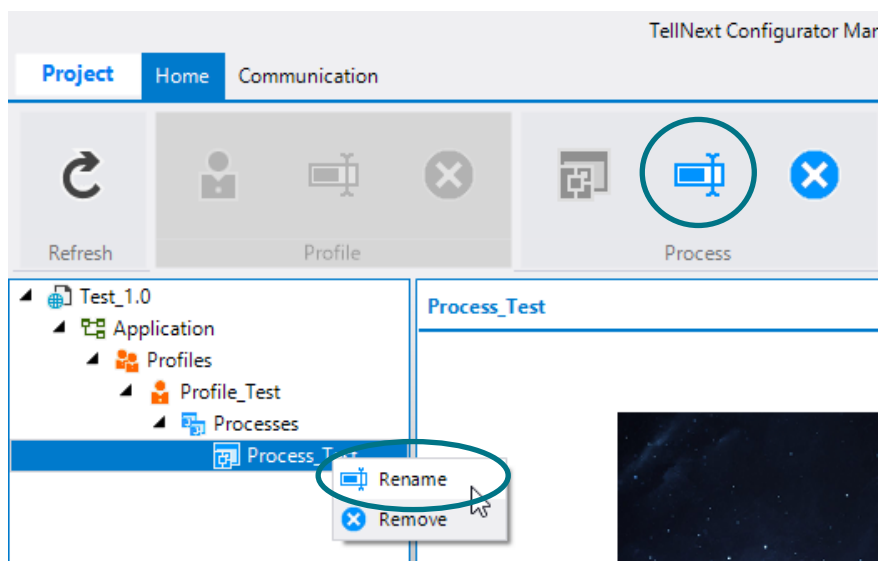
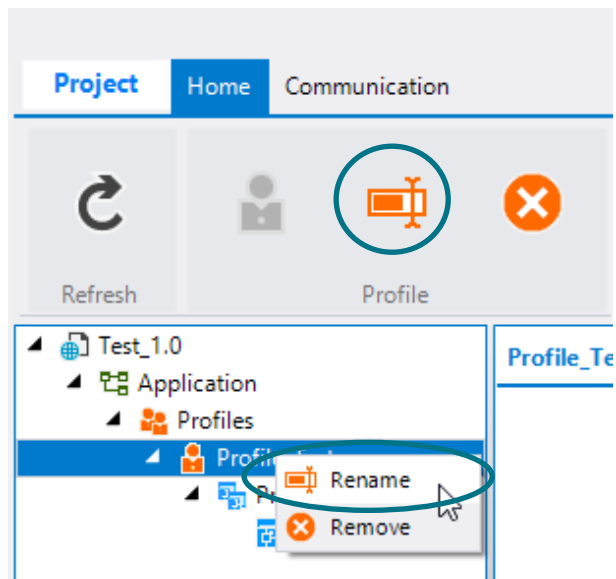
Save Cancel



You can create as many processes pending on a profile as you need.

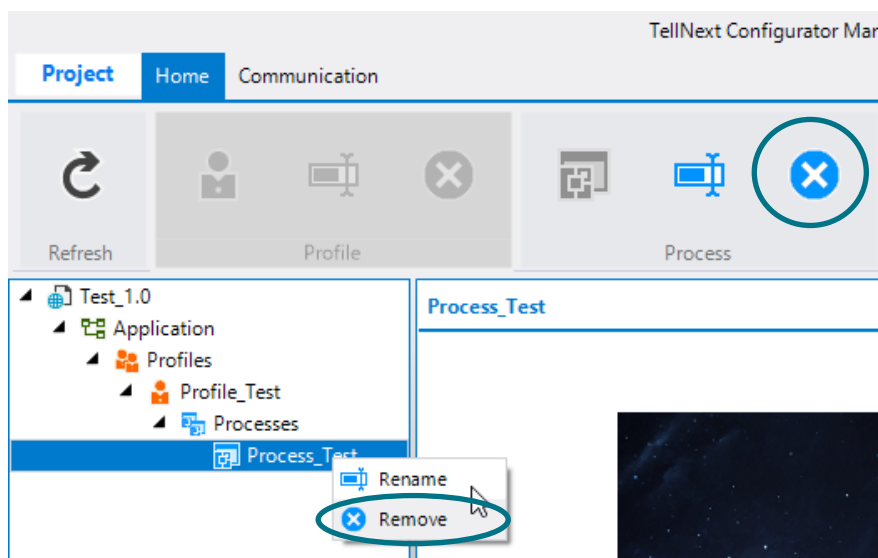
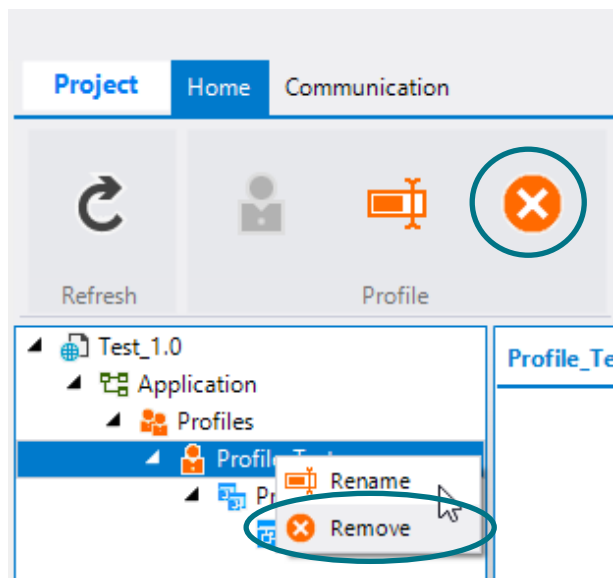
## RENAME PROFILES OR PROCESSES

For renaming a profile or a process you must select it and click on the right mouse button or the secondary menu bar.



## DELETE PROFILES OR PROCESSES

Similarly, existing profiles or processes can be deleted. That is using again the right mouse button or the secondary menu bar too.

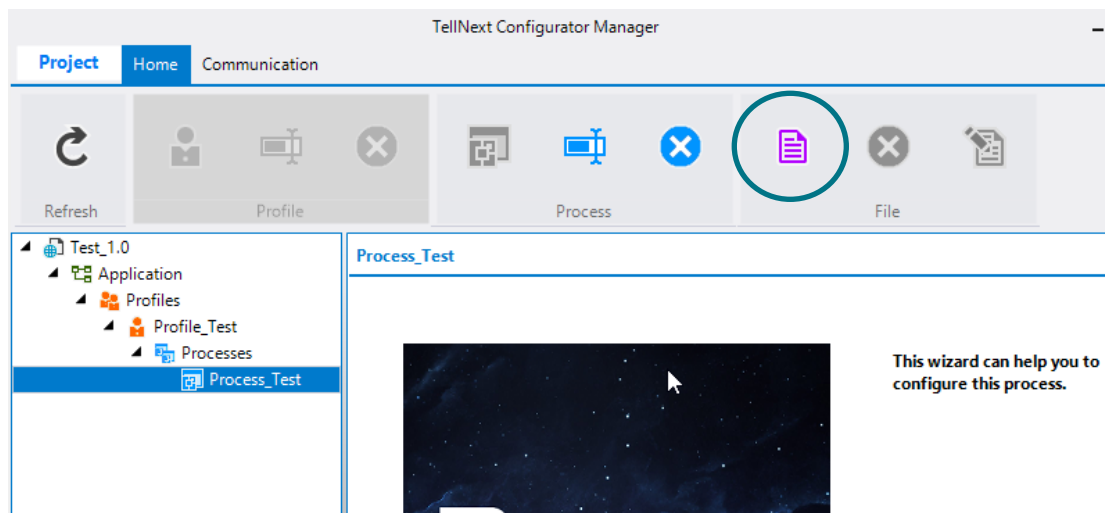


## ADDITIONAL FILES

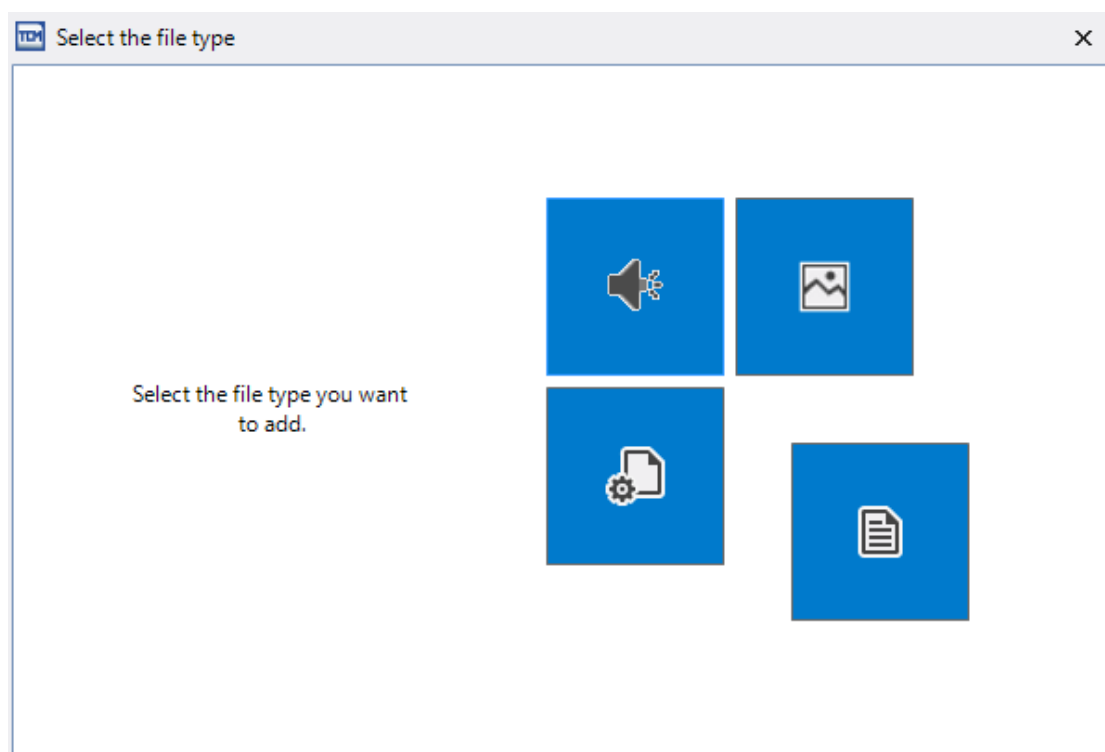
With TCM you can include to your project additional files like sound, images, configuration files or other files.

Adding files option is available from Application section or from Profiles or Processes that have been created.

In any of these sections you can add a file using the secondary menu bar button about managing files.



Adding a file, you will be required to select the file type you want to include to your project.



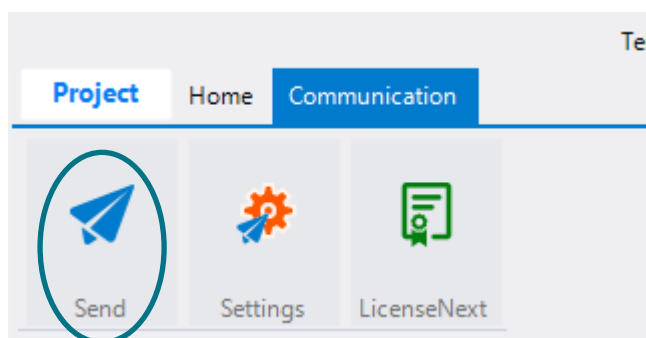
## DEPLOY TO ANDROID DEVICE

Once you have your project complete and your jcf files have been validated if you have modified any parameter, it is time to deploy it to your Android device.

Before deploying the project to your device, some requirements must be met:

- Only ONE Android device must be connected through the USB port to the PC
- TellNext app must be previously installed in the Android device

You must use the option Send in your Communication Main Menu:

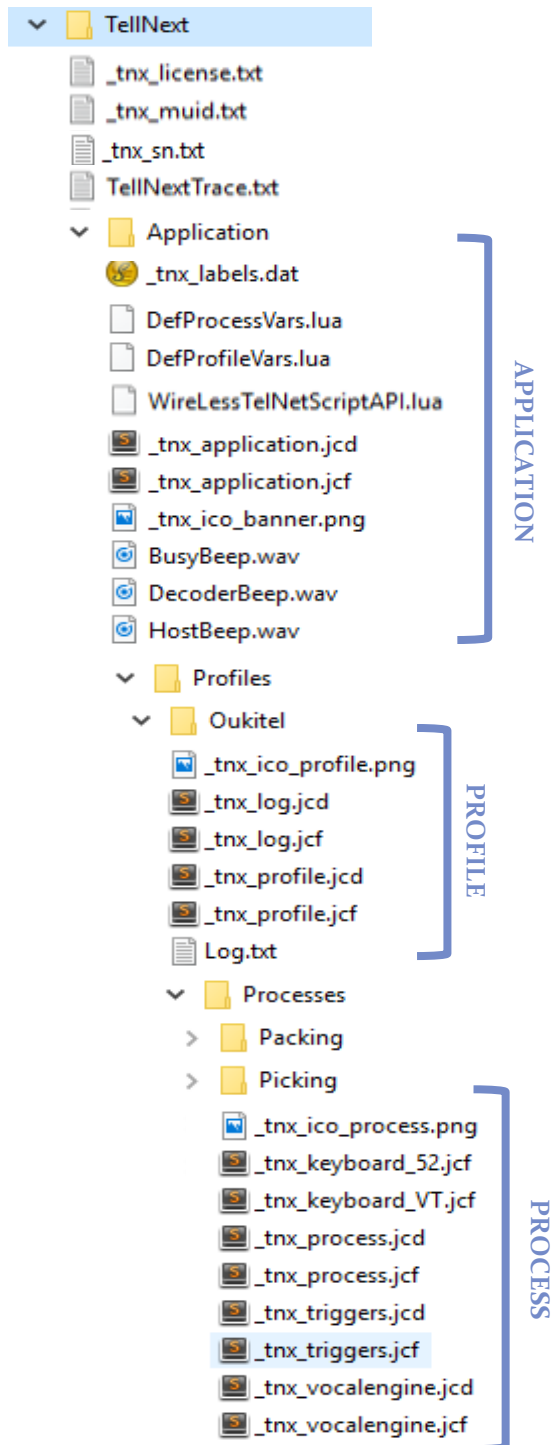


**NOTE:** If there is an existing TellNext folder in your Android device and you execute SEND option, this folder will be restored with the files from the project. You will lose your previous data from TellNext folder.

As a reminder, we retrieve the main folder structure of TellNext in your Android terminal. This is a similar structure you will get with a TCM project.

Please, for further information, refer to [TellNext\\_quick\\_configuration\\_guide.docx](#)





## ANNEX

It can be useful to know some details of files generated with a TCM project.

<b>C:\HubOne\TellNextConfigurationManagerProjects</b>			
Contains subfolders for every project created with TCM			
	<b>Project_1</b>	Full TCM project	
		<b>Template</b>	Contains all source files and wizards
		<b>Versions</b>	Contains subfolders for each project version you have generate. In every version subfolder you have the TCM file that identifies and opens your project. From Application folder you will have the TellNext structure to deploy to your Android device.